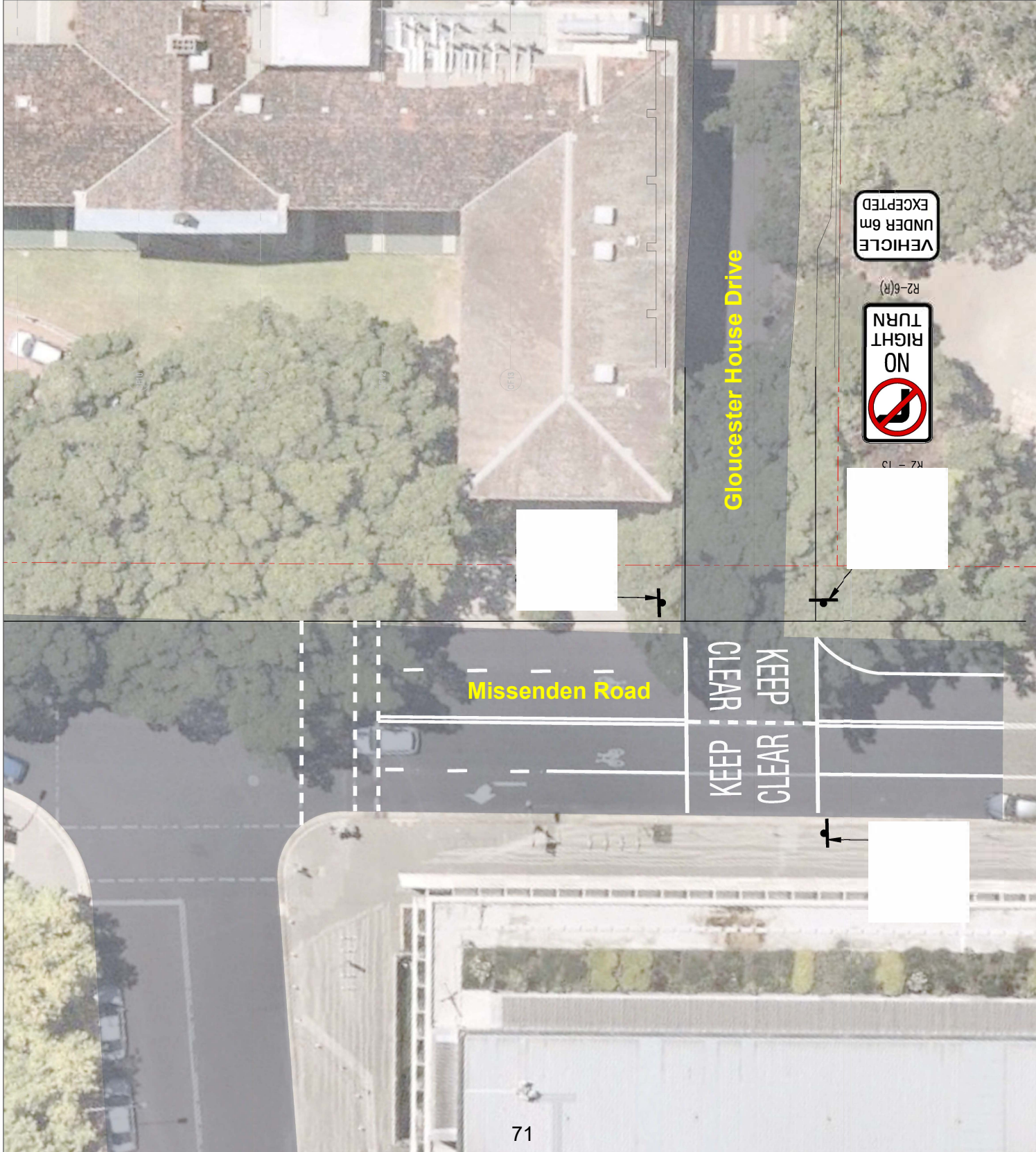




NOTES:
This document is a preliminary design and is the property of
TTW CIVIL DESIGN. ANY CHANGES MUST BE APPROVED BY TTW
AND MUST NOT BE MADE WITHOUT APPROVAL.

71



SCALE 1:100
AT ORIGINAL SIZE

SCALE 0 1 2 3 4 5
m

	PROJECT MANAGER TSA	CLIENT Health Sydney Local Health District NSW GOVERNMENT Health Infrastructure CPDR CIVIL DESIGN	ARCHITECT Jacobs BATESSMART NEESON MURCUTT + NEILL	STRUCTURAL CIVIL ENGINEERING TTW 632-519-0700 Level 10, 115 Macquarie Street, Sydney, NSW 2000	PROJECT ROYAL PRINCE ALBERT HOSPITAL REDEVELOPMENT	DRAWING TITLE TTW - TEMP LINEMARKING AND SIGNAGE AT MISSENDEN ROAD INTERSECTION	STATUS FOR CONSTRUCTION	DRAWN WW DESIGNED TD	CHECKED TD APPROVED TM	SCALE @ B1 1:100	DRAWING NO. RPA-CIV-TTW-DRG-TW-020021	REVISION 01
NO. SHEETS												
TOTAL SHEETS												
DATE												
PROJECT NAME												
CLIENT												
PROJECT MANAGER												
ARCHITECT												
STRUCTURAL CIVIL ENGINEERING												
PROJECT												
DRAWING TITLE												
STATUS												
DRAWN												
DESIGNED												
CHECKED												
APPROVED												
SCALE @ B1												
DRAWING NO.												
REVISION												